

MS-164HDA 1/4-inch 920,000 pixels analog HD color camera 1280×720 , low distortion lens!



Key feature

- 52.5(H)×48.2(W)×38.5(D)mm
- 1/4-inch 920,000 pixels CMOS sensor
- Resolution 1280×720
- Low distortion lens
- Mirror image (Optional)
- Low power consumption
- DC+12V
- TV system supports analog HD
- Cost-effective type

1/4-inch

920,000 pixels CMOS sensor

1280×720

0.5Lux (F1.4)

Analog HD

Approx. 270g

Low distortion lens adoption

52.5(H)×48.2(W)×38.5(D)mm

DC+12V

Model

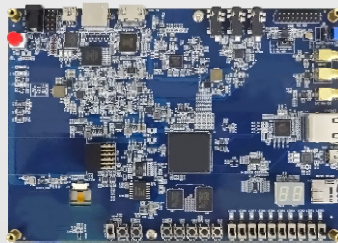
Lens type

MS - 164HDA

- | | |
|------------------------------|---------------------------------|
| TR29 (f=2.9mm,H=62° ,V=38°) | JD45 (f=4.5mm,H=43° ,V=25°) |
| AL30 (f=3.0mm,H=60° ,V=36°) | JD60 (f=6.0mm,H=32° ,V=19°) |
| JD30 (f=3.0mm,H=60° ,V=36°) | JD178 (f=17.8mm,H=10.5° ,V=6°) |
| JD36 (f=3.6mm,H=53° ,V=33°) | |
| JD39 (f=3.9mm,H=48° ,V=29°) | |

Examples showing the use

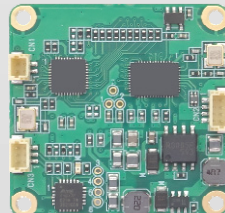
Processing board



MS-164HDA



MS-TR104AUD
(Analog HD to YUV,USB2.0 conversion module)



Digital YUV 8bit

PC



Analog HD

USB2.0

ML-7AH
(7-inch monitor)



ML-7AHR
(7-inch monitor with recorder function)



MR-1004M
(4ch DVR)



