

MS-404HDA Analog HD C mount 1/4-inch 920,000 pixels color camera **Power supply superimposed!**



Key feature

- Small size at 29(H)×29(W)×29(D)mm
- 1/4-inch 920,000 pixels CMOS sensor
- Resolution 1280 × 720
- C-mount
- Mirror image (Optional)
- Low power consumption
- Power supply superimposition
- TV system supports analog HD
- Cost-effective type

1/4-inch

920,000 pixels
CMOS
sensor

1280×720

0.5Lux
(F1.4)

Analog HD

Mirror image
(Optional)

C-mount

29(H)×
29(W)×
29(D)mm

Approx. 85g

Power supply
superimposition

External connectors



Power and video BNC connector

Pin number	Signal name
1	VIDEO/12V
2	GND

MS - 404HDA

Model

Lens mount



C : C-mount lenses
NM : No mount

Lens type



CH40 (f=4.0mm)
CH60 (f=6.0mm)
CH80 (f=8.0mm)
CH120 (f=12.0mm)
CH160 (f=16.0mm)
CH250 (f=25.0mm)

CH40 (f=4.0mm)



CH40 (f=6.0mm)



CH80 (f=8.0mm)



CH120 (f=12.0mm)



CH160 (f=16.0mm)



CH250 (f=25.0mm)



MS-404HDA
(Analog HD camera)



Examples showing the use

ML-7AHR
(7-inch monitor with recorder function, 1080p)



ML-7AH
(7-inch monitor, 720p)

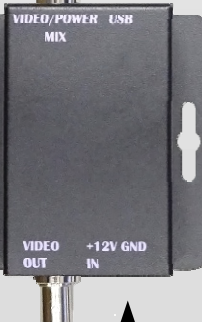


Analog HD

Analog HD

USB2.0

PC



MS-PVM25AU-HD
(Analog HD to power supply superimposed,
USB2.0 conversion box)

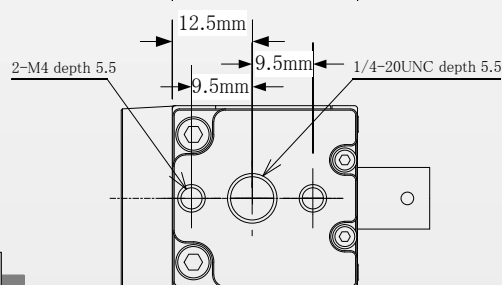
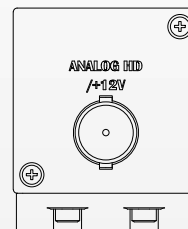
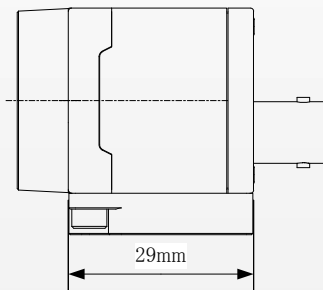
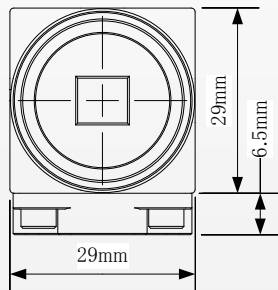
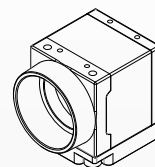
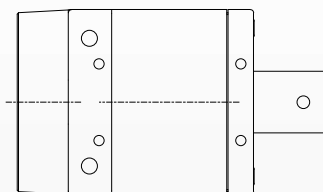
DC12V

Analog HD

MR-1004M
(4ch DVR)



Externals



Specifications

Item	Specifications
Model	MS-404HDA
Image size	1/4-inch color CMOS sensor
Signal method	Analog HD
Number of video output pixels	1280(H) × 720(V)
Unit cell size	2.8 μm(H) × 2.8 μm(V)
Frame rate	30fps
Scanning system	Progressive scan method
Synchronizing system	Internal synchronization
Image output	VBS: 1.0p.p / 75 Ω
Minimum illumination	0.5Lux(F1.4)
S/N	45dB
AWB	AUTO
AGC	AUTO
Camera shutter	AUTO
Lens	f=4.0mm, 6.0mm, 8.0mm, 12.0mm, 16.0mm
Power supply	Power supply superimposition
Power consumption	1.2W
External dimensions	29(H)×29(W)×29(D)mm (Without tripod adapter)
Weight	Approx. 85g
Operating temperature	-10°C ~ +50°C
Operating humidity	20~80%(No dew condensation)

MOSWELL

<https://www.moswell.co.jp>
E-mail: sales@moswell.co.jp

MOSWELL CO., LTD.

7-15 GOSHOYAMA-CHO, NISHI-KU,
YOKOHAMA, KANAGAWA, 220-0043, JAPAN

TEL: +81-45-334-7462(Direct Sales)
FAX: +81-45-334-7463

Store

ACCUM CO., LTD.

(Moswell's directly managed distributor)

7-15 GOSHOYAMA-CHO, NISHI-KU,
YOKOHAMA, KANAGAWA, 220-0043, JAPAN

TEL: +81-45-315-7464
FAX: +81-45-315-7468